



POROS PORT

Coordinates: 38° 9' 0" N 20° 46' 0" E

Draft: $\geq 3,00\text{m}$

Inhabitants: 300

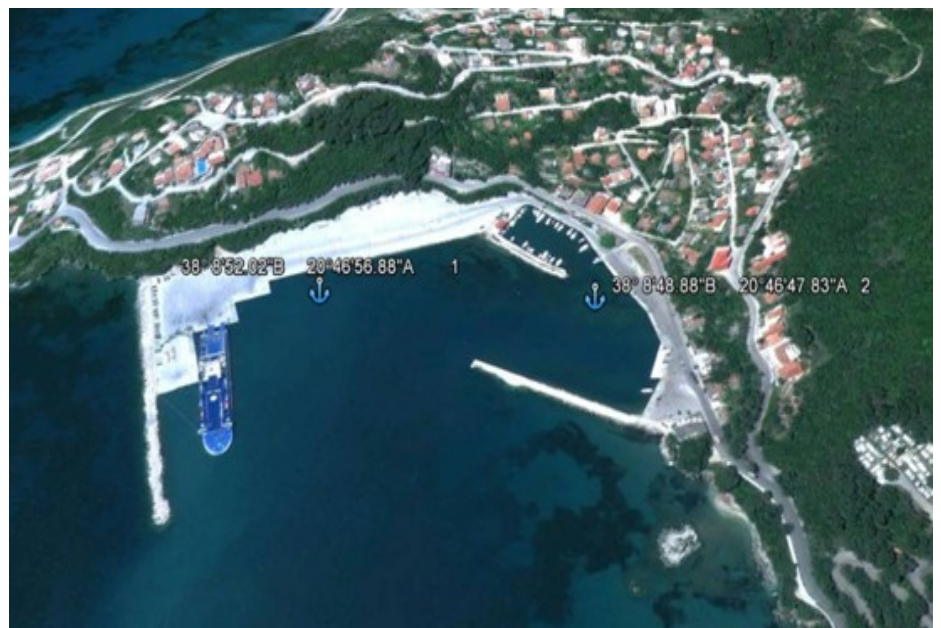
DISTANCES

ARGOSTOLI	44 km
AIRPORT	45 km
SAMI	30 km
ANTISAMOS	33 km
MELISSANI CAVE	37 km
DROGARATI CAVE	33 km
MYRTOS	50 km
ASSOS	60 km
St GERASIMOS	38 km
AGIA EFIMIA	38 km
FISKARDO	75 km



KEFALONIA YACHTING MANAGEMENT COMPANY

5, Laskaratou str.
Argostoli
Kefalonia 28100, Greece
Tel: (+30) 26710-25595
Fax: (+30) 26710-26255
Mobile (24h) :
(+30) 6937 322733
(+30) 6950 555666
info@kefaloniayachting.com
VHF 10
Skype id: kefaloniayachting
<http://www.kefaloniayachting.com>





POROS PORT

Coordinates: 38° 9' 0" N 20° 46' 0" E

Draft: ≥ 3,00m

Inhabitants: 300

Poros is a seaside town that combines mountain and sea.

The green landscapes are followed by beautiful shores and create sceneries of unique style.

Poros has contemporary hotel units, taverns, cafes and bars.

The beach of Poros is rather cosmopolitan, with a length of more than 2km, surrounded by small, protected ports and golden shores with crystal clear waters.

Poros is of great archaeological interest. In Bourtzi location, the excavations brought into light a dome-shaped grave of Mycenae period.

It is one of the most important findings and proves that the region was inhabited since 1400BC.

The grave is one of the best saved in the island. It is built with square gigantic rocks with a diameter of 7m.

Many golden jewels, copper tools and seals were found.



KEFALONIA YACHTING MANAGEMENT COMPANY

5, Laskaratou str.
Argostoli
Kefalonia 28100, Greece
Tel: (+30) 26710-25595
Fax: (+30) 26710-26255
Mobile (24h) :
(+30) 6937 322733
(+30) 6950 555666
info@kefaloniayachting.com
VHF 10
Skype id: kefaloniayachting
<http://www.kefaloniayachting.com>